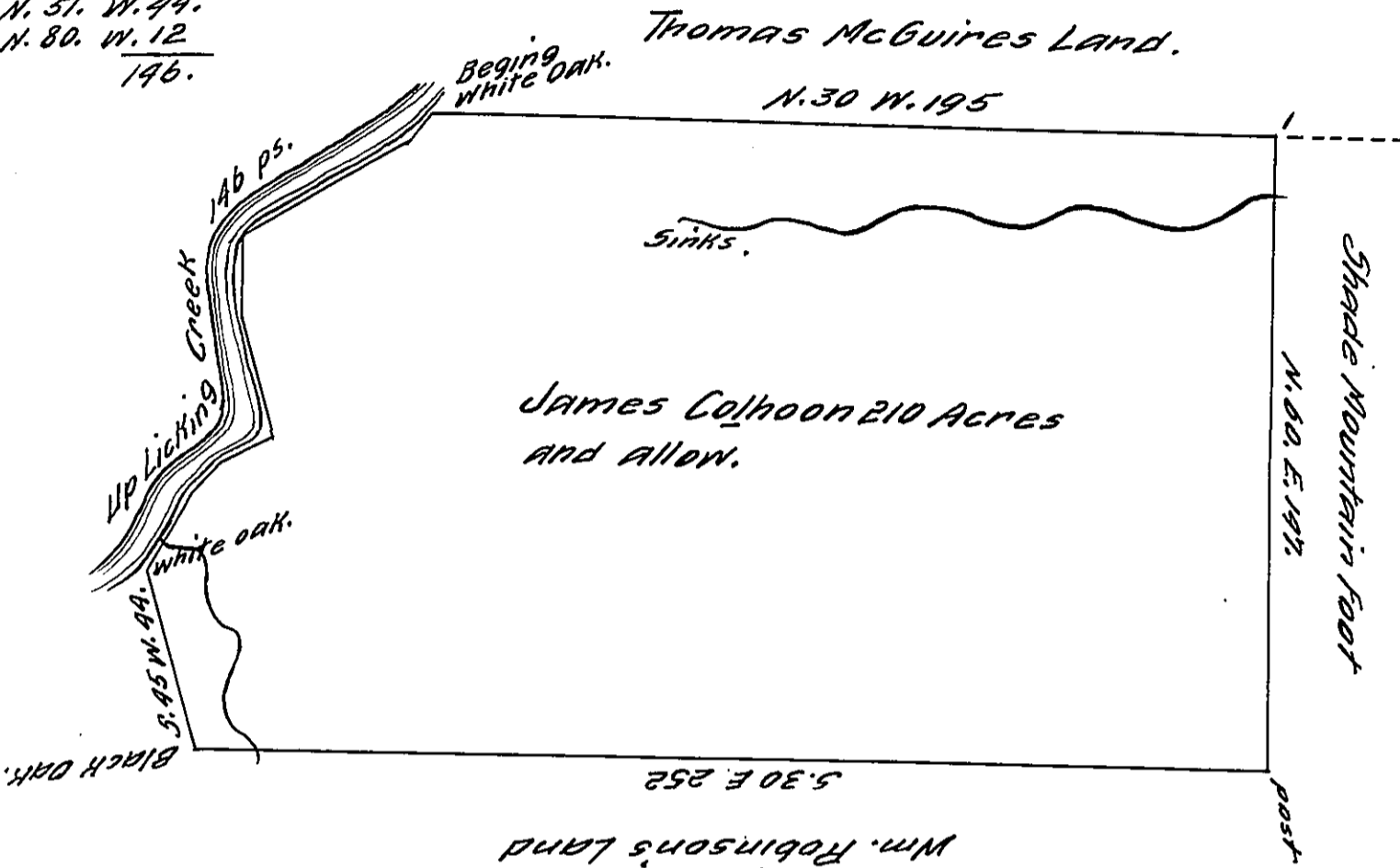


Courses and Distances }
 up Licking Creek
 N. 88. W. 20.
 N. 80. W. 9.
 N. 59. W. 14.
 S. 95 W. 29.
 S. 60. W. 18.
 N. 57. W. 94.
 N. 80. W. 12
 146.



The Draught of a Tract of Land called
 Situate on Licking Creek Cumberland County Containing
 Two Hundred Ten Acres with the usual Allowance of Six
 Acres p Cent for Roads. Surveyd 25th of April Anno Dom
 1765. In Pursuance of a warrant from the Honble Prop-
 rietaries to James Colhoon. Bearing date at Philada.
 the 3d day of ^{June} ~~April~~ Anno Dom. 1762.
 To John Lukens Esq. S. G. } p. Wm. Maclay, D. S.
 of Pennsylvania. }
 Now Milford Township Mifflin County.

IN TESTIMONY that the above is a copy of the original remaining on file in
 the Department of Internal Affairs of Pennsylvania, made
 conformably to an Act of Assembly approved the 16th day of
 February, 1833, I have hereunto set my Hand and caused
 the Seal of said Department to be affixed at Harrisburg,
 this twenty first day of February 1911

Henry Houck
 Secretary of Internal Affairs.